

OFFICE SPACE  
FOR LEASE



## 225 HOLMES AVENUE

Located in Downtown Huntsville, 225 Holmes is a luxury five-story mixed-use development in the heart of Huntsville's business district. This property is situated within walking distance of numerous restaurants, retail, offices, and hotels, as well as across the street from a six-story city parking deck.



WESLEY CRUNKLETON, CPM  
Principal  
256-348-7600  
[wesley@crunkletonassociates.com](mailto:wesley@crunkletonassociates.com)

# PROPERTY HIGHLIGHTS



## ADDRESS

225 Homes Ave NE  
Huntsville, AL 35801



## FOR LEASE

Office Space

## SQ FT AVAILABLE

2nd Floor:

Suite 205 - 3,698 SF

Suite 210 - 8,072 SF

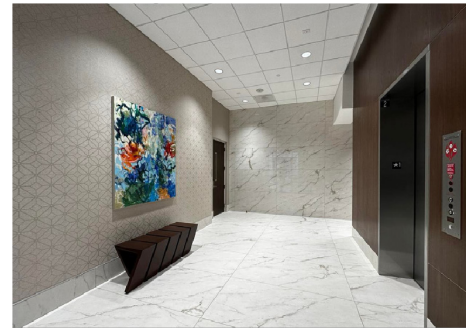
3rd Floor - 14,589 SF

4th Floor - 14,522 SF



## PRICE

Call For Pricing



## ABOUT THE PROPERTY

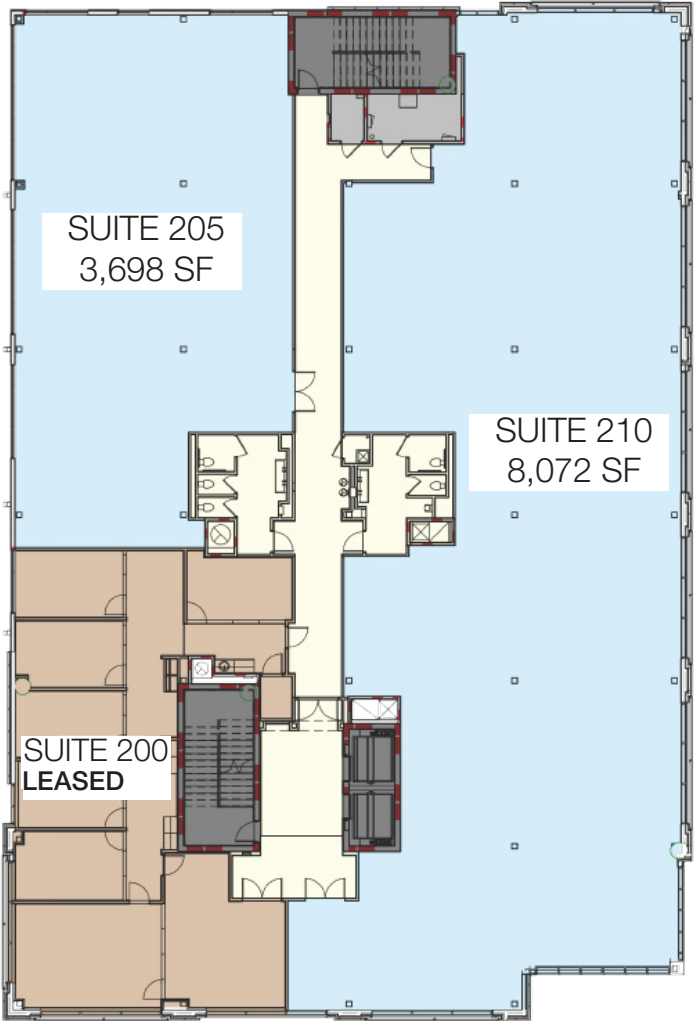
- Conveniently located on the corner of Holmes Avenue and Greene Street.
- Parking for the property is located across the street at the Greene Street city parking deck, a six-story garage with approximately 490 parking spaces. Spots can be rented from the City of Huntsville.
- Situated in the city's main business district with a daytime population of 74,940 within a 3-mile radius.
- High visibility on a highly trafficked Downtown Huntsville street.
- Site is adjacent to downtown retailers and restaurants including: SiP, Rao's Pizza, Dirty Olive, One Eleven, YMCA, and DGX.
- Also near multiple other retail and restaurant options, Melt, Moon Bakeshop, Oshi Poke Bowl, Honest Coffee Roasters, Elitaire Boutique, Roosevelt & Co., Sea Salt Oyster Bar, Body Rok Fitness, Wheelhouse Salon, and many more.
- Near multiple residential developments including: The Avenue, Belk Hudson Lofts, and 301 Holmes.
- Within walking distance of more than 1,000 hotel rooms: 106 Jefferson Curio by Hilton, Embassy Suites, Hampton Inn & Suites, Springhill Suites, Trilogy Hotel, and AC Hotel by Marriot—more to come.



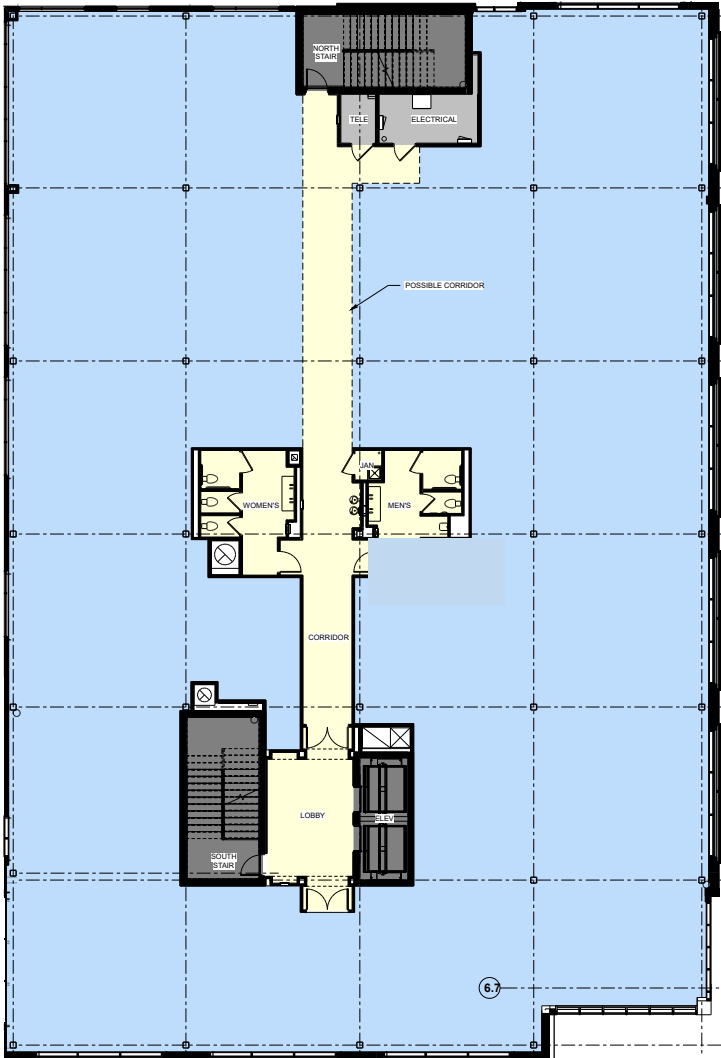
# FLOOR PLANS



2<sup>nd</sup> Floor:  
Suite 205 - 3,698 SF  
Suite 210 - 8,072 SF



3<sup>rd</sup> Floor - 14,589 SF  
(Divisible)  
4<sup>th</sup> Floor - 14,522 SF  
(Divisible)



# AREA MAP



**CRUNKLETON**  
COMMERCIAL REAL ESTATE GROUP

**WESLEY CRUNKLETON, CPM**

Principal  
256-348-7600

wesley@crunkletonassociates.com