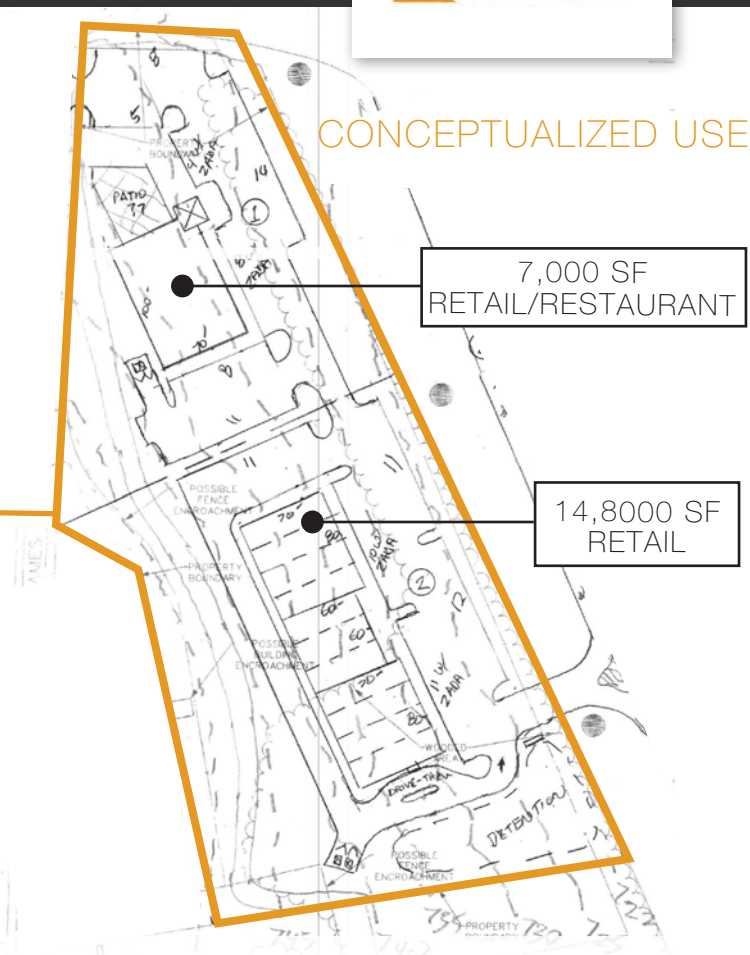


HAMPTON COVE, AL 35763

# DEVELOPMENT OPPORTUNITY AT SIGNALIZED INTERSECTION



## LOCATION



Intersection of Highway 431  
and Miller Lane  
34.674146, -86.492250

## ACRES AVAILABLE



3.8 AC (can be divided)

## ZONING



No Zoning

## PRICE



Call For Pricing

## ABOUT THE PROPERTY

Prime retail land available in Madison County along one of the region's most active retail corridors. Positioned in a high-visibility area with strong traffic counts, this site offers excellent potential for retailers looking to grow in a rapidly developing market.

## PROPERTY HIGHLIGHTS:

- Located at a signalized intersection.
- Surrounded in a high-income, suburban area.
- Potential to be annexed into the city of Huntsville
- High traffic count and visibility.
- High growth-rate with new developing multi-family construction.



**CRUNKLETON**  
COMMERCIAL REAL ESTATE GROUP

## FOR MORE INFORMATION:

**Wesley Crunkleton**

☎ 256-536-8809

✉ [wesley@crunkletonassociates.com](mailto:wesley@crunkletonassociates.com)



# PROPERTY MAP

DEMOGRAPHICS	1-Mile	3-Miles	5-Miles
Population	2,722	21,113	61,227
Households	1,077	8,308	24,908
Avg HH Income	\$190,573	\$176,310	\$162,364
Median HH Income	\$142,554	\$136,999	\$124,774



FOR MORE INFORMATION:

Wesley Crunkleton

256-536-8809

wesley@crunkletonassociates.com