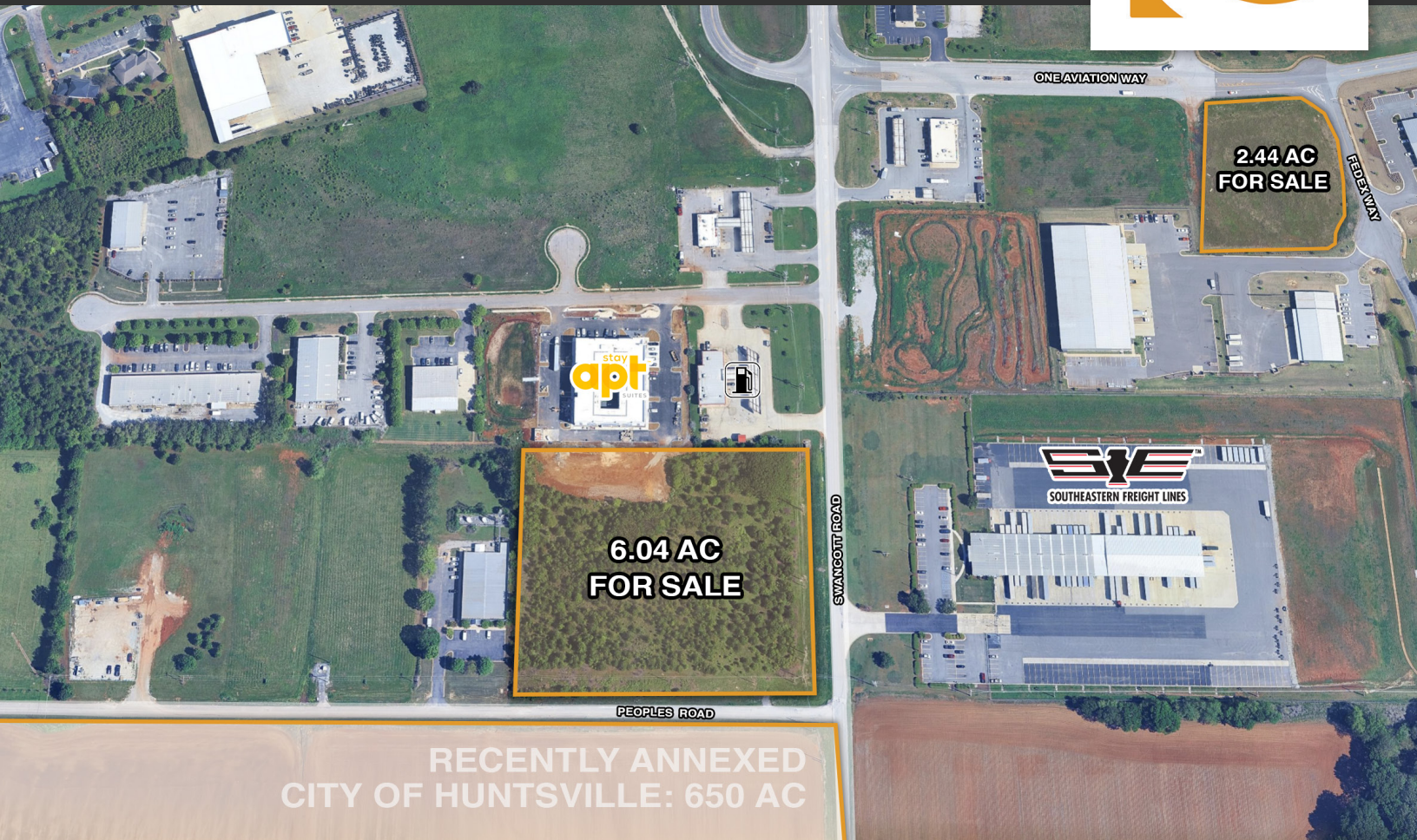


## LAND FOR SALE



RECENTLY ANNEXED  
CITY OF HUNTSVILLE: 650 AC



### LOCATION

NW Corner of Swancott Rd &  
Peoples Rd  
Madison, AL 35756  
34.636487, -86.843147



### ACRES AVAILABLE

6.04 AC (Potentially Divisible)



### PRICE

\$2,800,000

### ABOUT THE PROPERTY

This 6.04-acre corner site at Swancott Road and Peoples Road is located in the growing Greenbrier industrial area, surrounded by established businesses. The property is positioned near a recently approved 650-acre annexation by Huntsville, Alabama planned for a future school and other commercial/residential development.

### PROPERTY HIGHLIGHTS:

- City of Huntsville: Zoned C4
- Excellent investment opportunity
- Corner lot with great visibility & access
- Can potentially be divided
- Easy access to I-565, Highway 20, Greenbrier Parkway, and I-65
- Proximity to \$6B Eli Lilly and Company development



**CRUNKLETON**  
COMMERCIAL REAL ESTATE GROUP

### FOR MORE INFORMATION:

**Eric St. John, CCIM**

256-384-7603

Eric@crunkletonassociates.com

**Anusha Alapati Davis**

256-384-7608

Anusha@crunkletonassociates.com

# PROPERTY MAP



RECENTLY ANNEXED  
CITY OF HUNTSVILLE: 650 AC

FOR MORE INFORMATION:

**Eric St. John, CCIM**  
 256-384-7603  
 Eric@crunkletonassociates.com

**Anusha Alapati Davis**  
 256-384-7608  
 Anusha@crunkletonassociates.com

