

THE
Range

3810
GOVERNORS DR.
SW HUNTSVILLE,
AL 35805

OFFICE SUITE
FOR LEASE



**LAST
REMAINING
SUITE**

MODERN OFFICE DEVELOPMENT IN THE HEART OF THE STOVEHOUSE DISTRICT

Located on Governors Drive, this Class-A building offers 49,000 square feet across three floors. Features include a spacious lobby, an open-air courtyard with community Wi-Fi, and convenient access to restaurants, bars, grocery stores, and live entertainment, all within walking distance.

CONVENIENT COMMUTE
LUXURIOUS AMENITIES
VIBRANT COMMUNITY
PROMINENT SIGNAGE
NEW DEVELOPMENTS
VISIBILITY & ACCESS
FREE PARKING



WESLEY CRUNKLETON, CPM
Principal
256-348-7600
wesley@crunkletonassociates.com

PROPERTY HIGHLIGHTS



ADDRESS

3810 Governors Dr. SW
Huntsville, AL 35805



PROPERTY NAME

The Range



SQ FT AVAILABLE

5,115 SF



TYPE OF PROPERTY

Office



PARKING

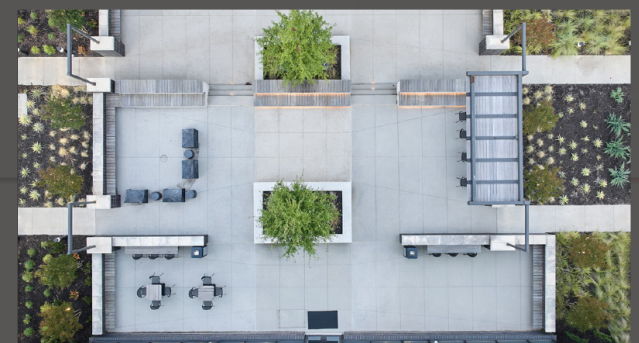
FREE Parking



PRICE

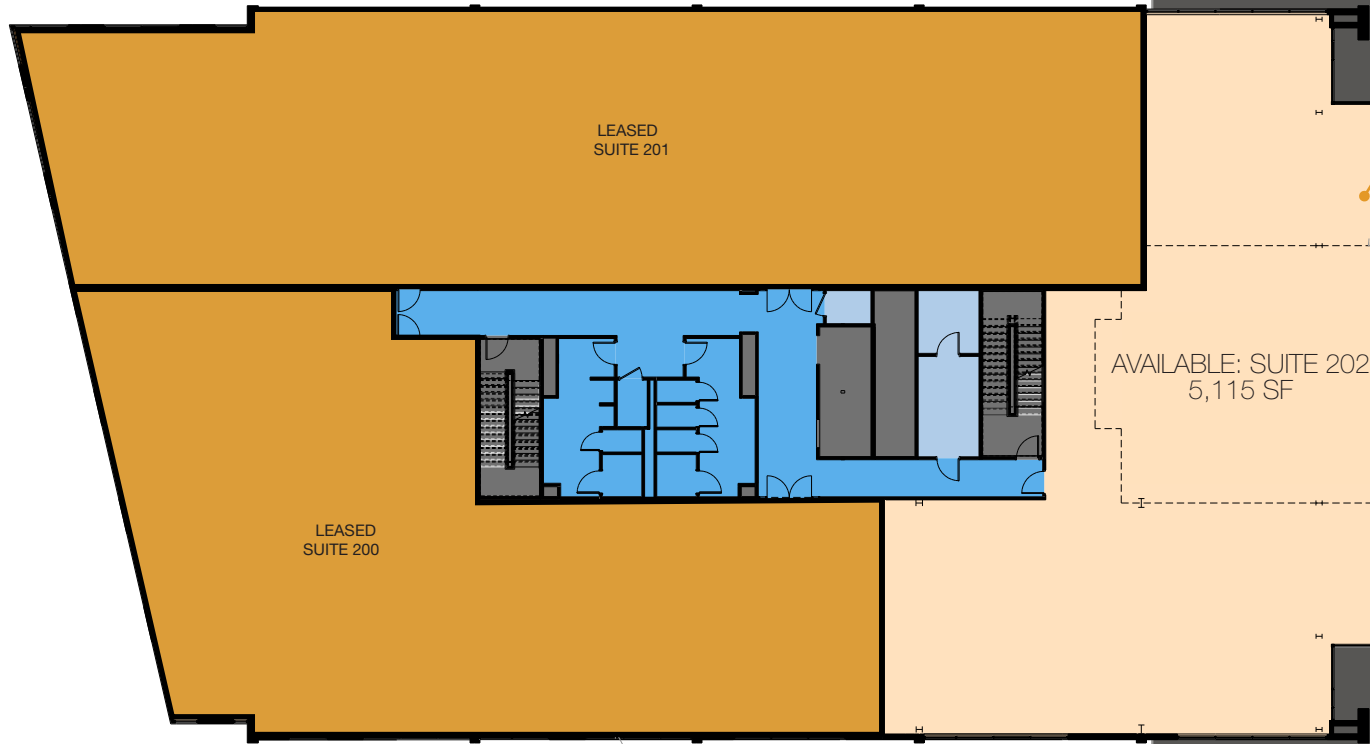
Call For Pricing

- Enjoy a short drive from Downtown Huntsville, Redstone Arsenal, Cummings Research Park, Huntsville Hospital Medical District, and other key areas.
- Located next to the popular Stovehouse development, offering a variety of local restaurants, an outdoor food garden, a wine bar, live music/events, fitness studios, a coffee shop, outdoor games, grocery store, and more.
- Neighboring "The Foundry," a mixed-use development featuring restaurant/retail spaces, 342 multifamily units, including 14 rentable townhomes.
- Direct access to the I-565 exit ramp via Governors Drive, with high visibility on Governors Drive (30,400 vehicles/day) and I-565 (97,756 vehicles/day).
- Benefit from available signage facing busy traffic roadways; Governors Drive and I-565.
- Enjoy a beautifully designed highend courtyard perfect for leisure with ample seating and wifi.



FLOOR PLAN

SECOND FLOOR- SUITE 202 5,115 SF AVAILABLE



OPTION A

Remaining available rentable space divided into (2) equally-sized tenant spaces.

SPACE WITHIN DASHED LINE INDICATES AREA IN WHICH NO FLOOR PENETRATIONS ARE PERMITTED.

SITE PLAN



AREA MAP



QUICK TRAVEL TO ALL MAJOR HUNTSVILLE AREAS

DRIVING TRAVEL TIMES

DOWNTOWN HUNTSVILLE	4 min 1.3 miles
HUNTSVILLE HOSPITAL	5 min 1.9 miles
LOWE MILL	3 min 1.1 miles
RESEARCH PARK	5 min 4.5 miles
REDSTONE ARSENAL	4 min 2.1 miles

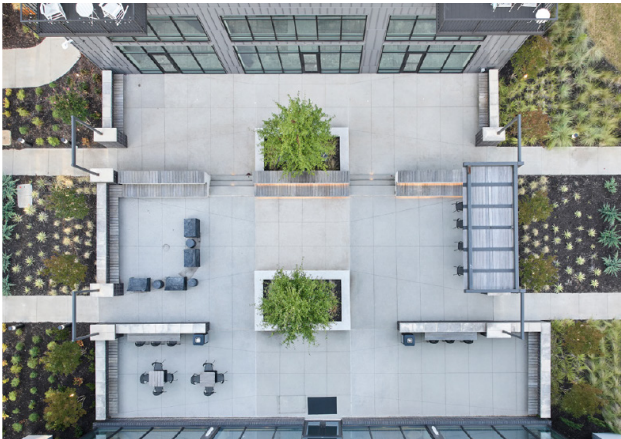
WALKING TRAVEL TIMES

THE FOUNDRY	1 min
STOVEHOUSE	2 min
CAMPUS 805	5 min

WALKABLE RETAIL AND RESTAURANT OPTIONS AT YOUR CONVENIENCE



PHOTOS



THE *Range*

3810 GOVERNORS DR. SW
HUNTSVILLE, AL 35805



CRUNKLETON
COMMERCIAL REAL ESTATE GROUP

300 Pratt Ave NE Huntsville AL 35801
256-536-8809
crunkletonassociates.com

WESLEY CRUNKLETON, CPM
Principal
256-536-8809
wesley@crunkletonassociates.com

THE BEACH COMPANY