

108 SOUTH SIDE SQUARE | DOWNTOWN HUNTSVILLE

FOR LEASE- DOWNTOWN OPPORTUNITY RETAIL & OFFICE SPACE AVAILABLE



LOCATION

108 South Side Square
Huntsville, AL 35801



SPACE AVAILABLE

Basement - 2,318 SF
First Floor - 2,089 SF
Second Floor - 2,182 SF



PRICE

Call For Pricing

ABOUT THE PROPERTY

108 South Side Square is located on the historic square in Downtown Huntsville. The site is a beautiful destination for restaurant, retail, and office tenants to join the heart of the city and Huntsville's main district for business, luxury living, dining, retail, and entertainment. Located on a walkable, tree-lined street, this site offers ideal visibility and access.

PROPERTY HIGHLIGHTS:

- Surrounded by numerous business professionals, daily shoppers, dining, hotels, attractions, convention center, museums, and annual events—all within convenient walking distance.
- Easy access to and from Interstate 565 and Memorial Parkway
- Approximate depth for overall building is 140'-141'; the approximate width is 18'6".
- Close to several city parking decks.
- Property suits a number of users including restaurants, retail, and office.
- In area with more than 1,000 nearby hotel rooms and vibrant tourism.
- Historic building that offers modern charm and amenities.



CRUNKLETON
COMMERCIAL REAL ESTATE GROUP

FOR MORE INFORMATION:

Eric St. John, CCIM | OFFICE

256-384-7603

Eric@crunkletonassociates.com

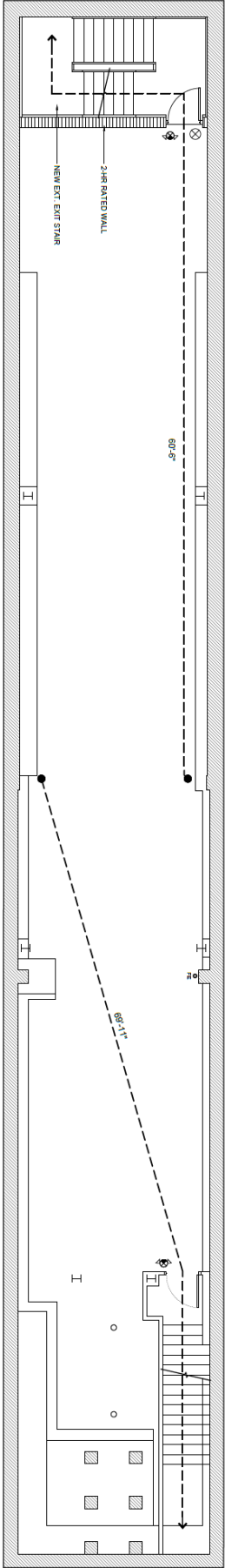
Anusha Alapati Davis | RETAIL

256-384-7608

Anusha@crunkletonassociates.com

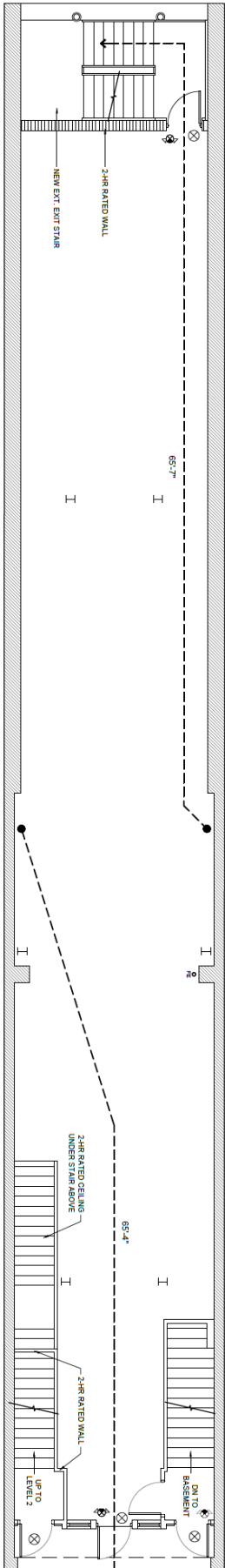
BACK

BASEMENT- 2,318 SF



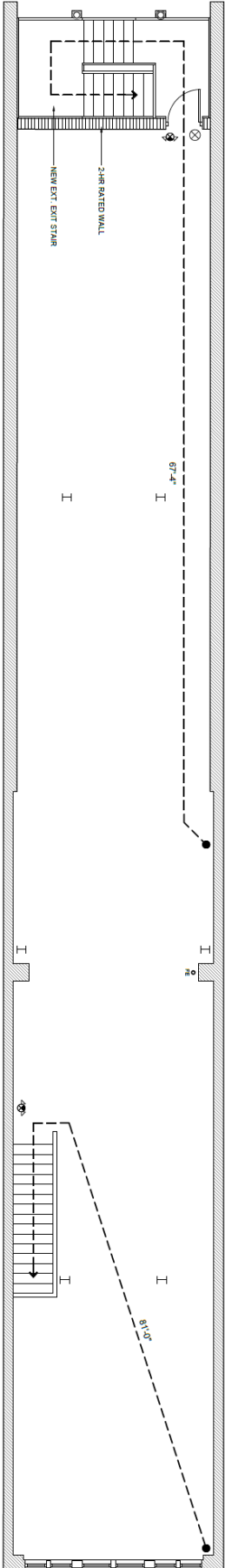
FRONT

FIRST FLOOR- 2,089 SF



Ground Floor Entry on South Side Square

SECOND FLOOR- 2,182 SF



INTERIOR PHOTOS



AREA MAP



FOR MORE INFORMATION:

Eric St. John, CCIM | OFFICE

256-384-7603

Eric@crunkletonassociates.com

Anusha Alapati Davis | RETAIL

256-384-7608

Anusha@crunkletonassociates.com



CRUNKLETON
COMMERCIAL REAL ESTATE GROUP