

415-A Church Street - HUNTSVILLE, AL

OFFICE SPACE FOR LEASE



PROPERTY HIGHLIGHTS

- Features large windows and abundant natural lighting.
- On-site parking.
- Church Street is now widened and includes a new intersection at Pratt Avenue.
- Easily accessible to I-565, Memorial Pkwy, and Hwy 72.
- Downtown location in close proximity to many entertainment, retail, and restaurant options.
- Elevator access to second floor.
- Two coffee shops within walking distance: Mason Dixon and Canadian Bakin'.

AVAILABLE SUITES Up to 8,055 SF (Can be Combined)

| | |
|------------------|----------|
| Suite 100 | 2,800 SF |
| Suite 101 | 2,800 SF |
| Suite 201 | 2,455 SF |

ABOUT THE PROPERTY

415-A Church Street is a beautiful location for office users to join the heart of the city and Huntsville's main district for business, luxury living, dining, retail, and entertainment. Building A is located within a development that's surrounded by multiple businesses and retail concepts for great co-tenancy.

LOCATION

415-A Church Street
Huntsville, AL 35801

PRICE

Call For Pricing.

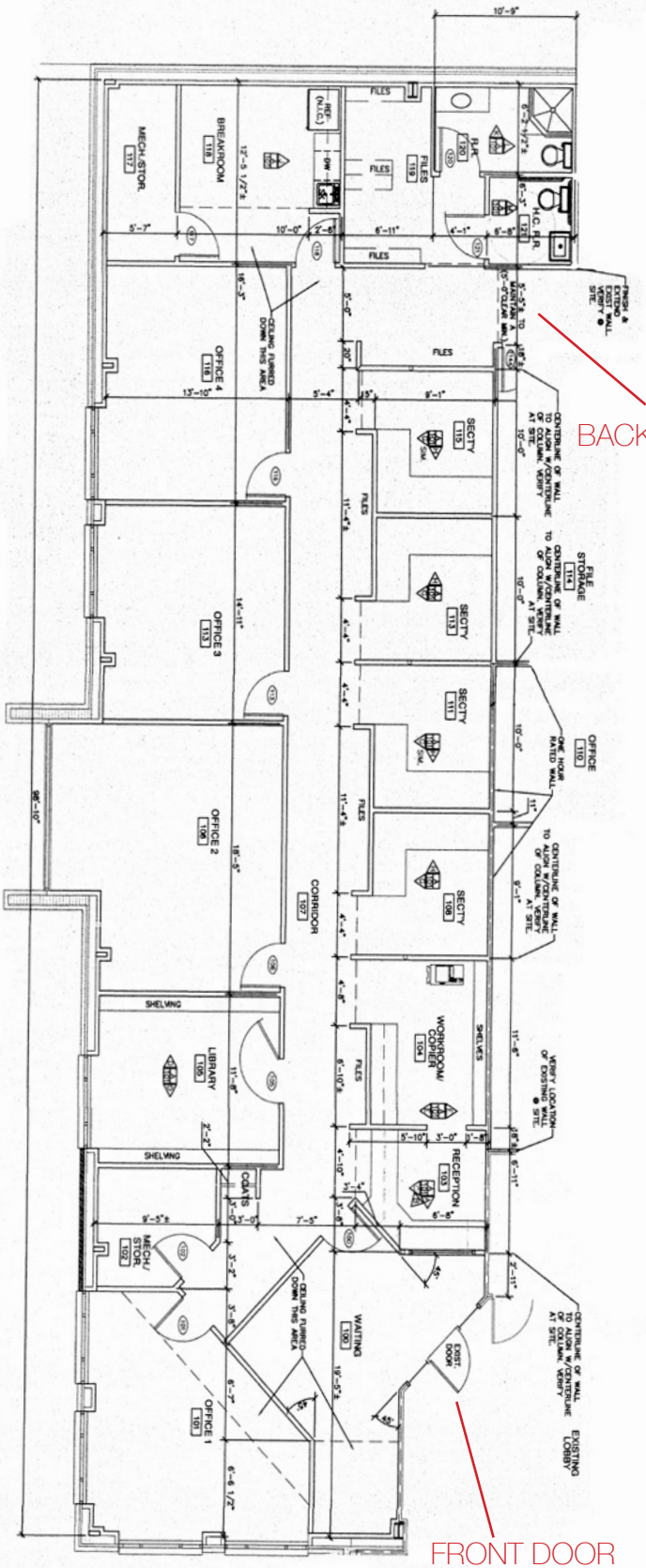
FOR MORE INFORMATION CALL

Eric St. John
256-384-7603
eric@crunkletonassociates.com

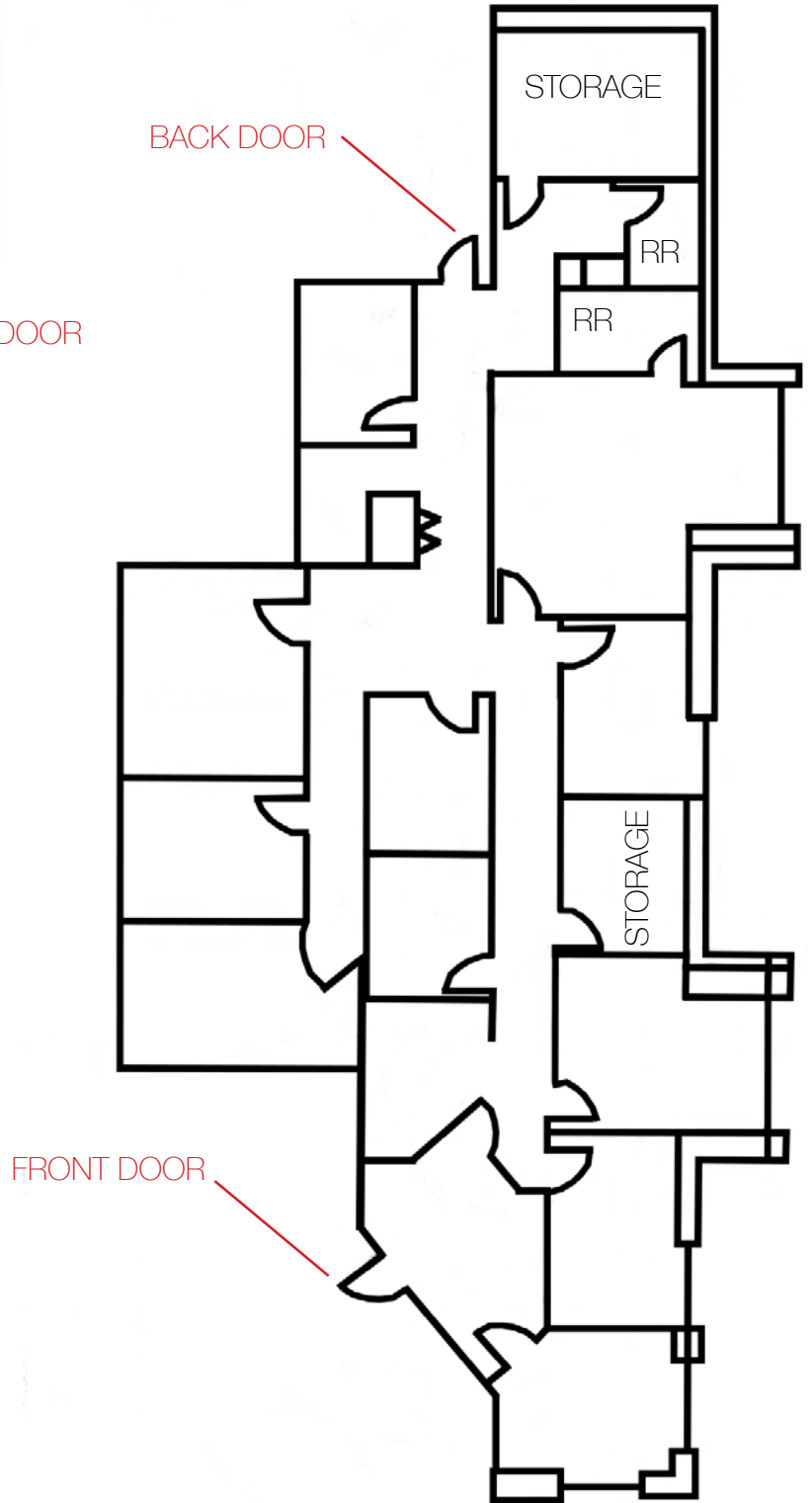


CRUNKLETON
COMMERCIAL REAL ESTATE GROUP

SUITE 100 - FLOOR PLAN
2,800 SF

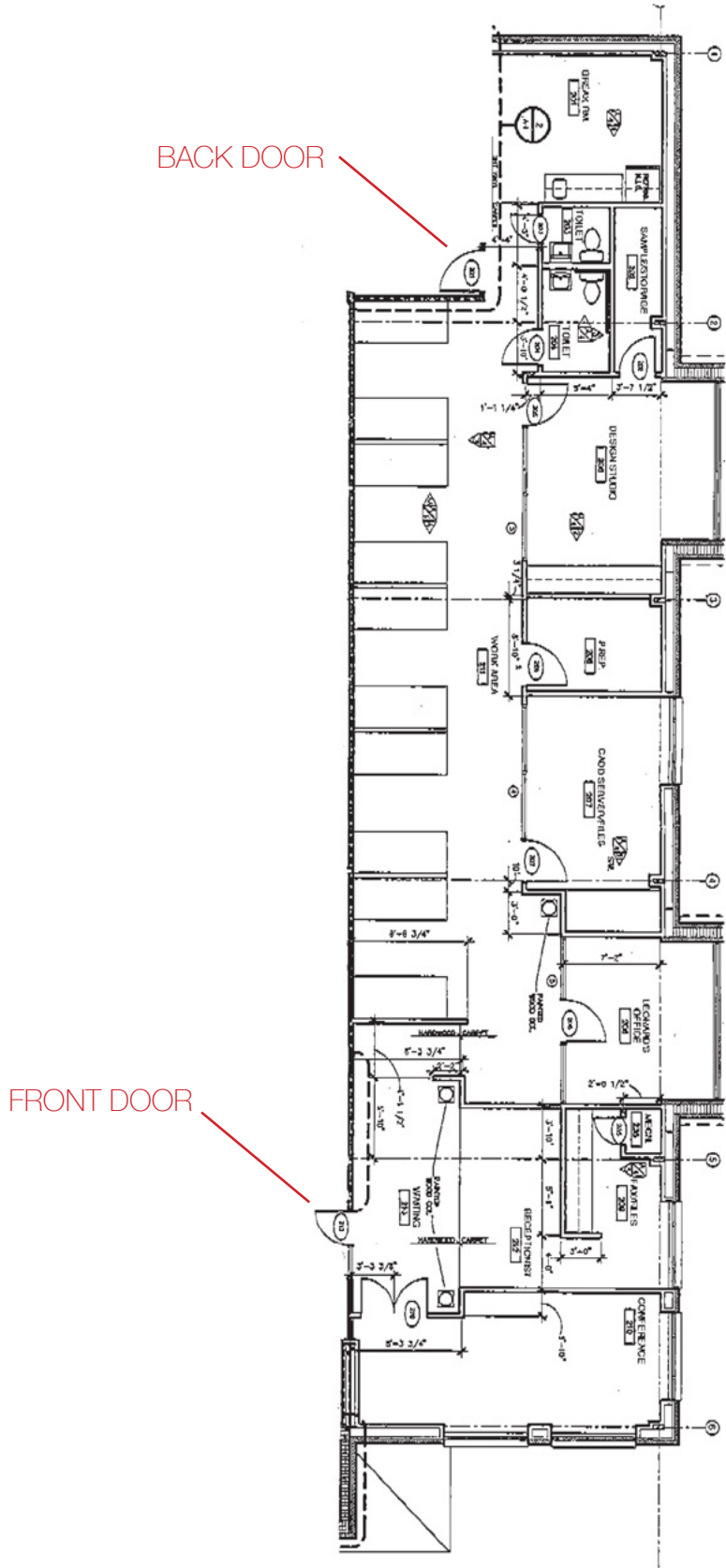


SUITE 101 - FLOOR PLAN
2,800 SF



SUITE 201 - FLOOR PLAN

2,455 SF



MAP SHOWING PROPERTY LOCATION

