

Lincoln Mill Dye House - HUNTSVILLE, AL

SPACE FOR LEASE AT HISTORIC LINCOLN MILL'S RETAIL CENTER



PROPERTY HIGHLIGHTS

- Suite 100 is a former fitness space with high-ceiling entryway and reception area, retail floor, lockers, shower facilities, and large workout space.
- The Dye Houses' current tenants include: Turbo Coffee; Fusion BBQ; GLS Kitchen + Bath; and High Point Climbing.
- Property has easy Exit to I-565 via Oakwood Avenue (the city's main thoroughfare) and quick access to Highway 72.
- Plenty of on-site parking.
- Campus houses 40 businesses within its main office building that patron on-site retail and fitness.
- Adjacent to The Lofts at Dallas Mill, a multifamily complex featuring 148 units.

DEMOGRAPHICS

	1 Mile	3 Mile	5 Mile
Population	7,506	57,483	116,159
Households	3,850	24,360	48,934
Avg Household Income	\$82,174	\$85,835	\$82,019

ABOUT THE PROPERTY

Suite 100 is located at the historic Lincoln Mill development, a 205,000-square-foot facility that was transformed into a premier Huntsville destination with office, retail, and food & beverage. Within the growing Meridian Street corridor that already features some of the city's most popular and unique retailer, Lincoln Mill's Dye House serves as the campus' retail hub where crowds come to eat, drink, relax, and workout.

LOCATION

1300 Meridian Street
Huntsville, AL 35801

SPACE AVAILABLE

Suite 100 - 2,083 SF

PRICE

Please Call For Pricing Information

FOR MORE INFORMATION CALL

Anusha Alapati Davis
256-384-7608
anusha@crunkletonassociates.com

Wesley Crunkleton, CPM
256-536-8809
wesley@crunkletonassociates.com

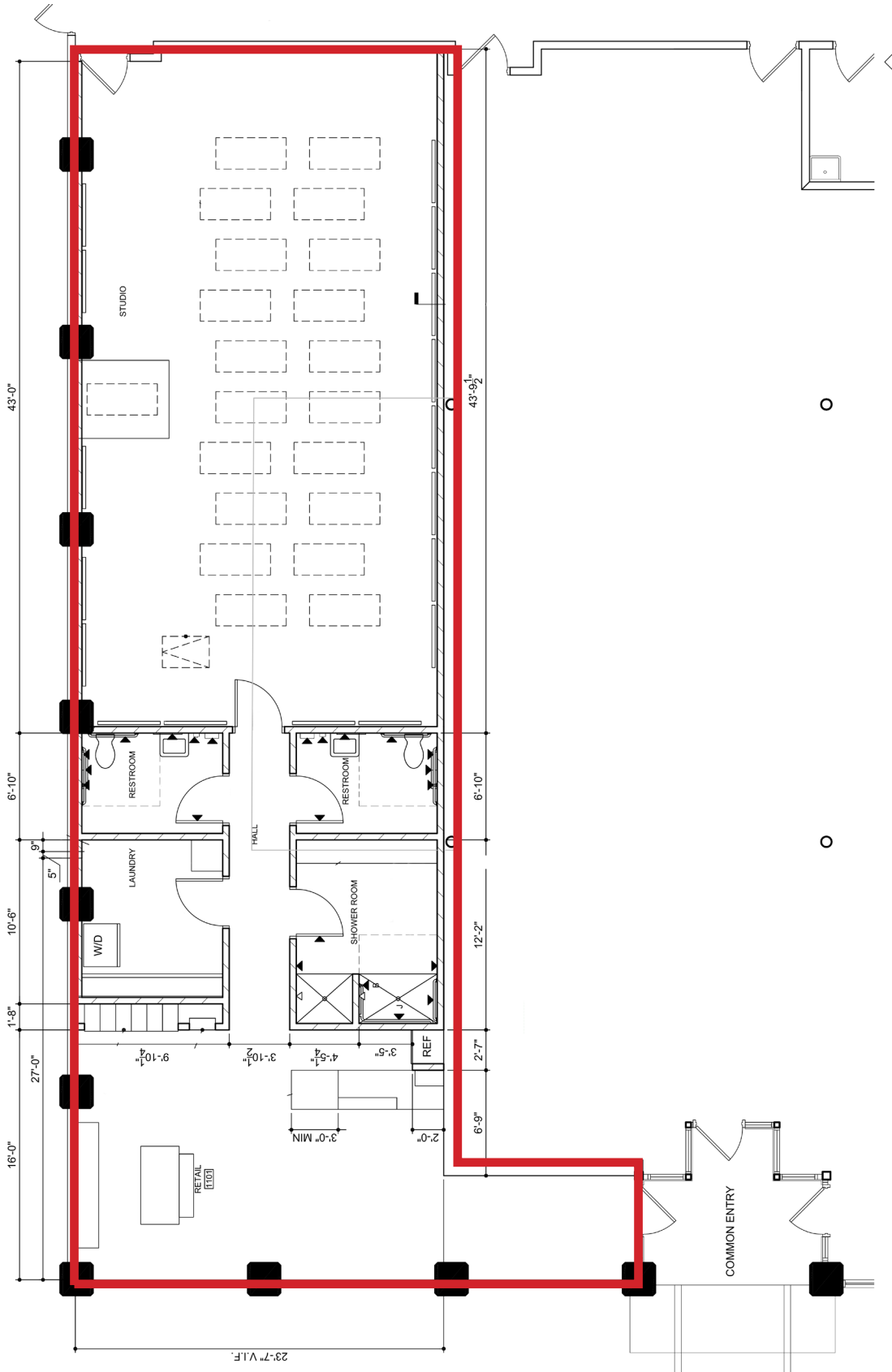


CRUNKLETON
COMMERCIAL REAL ESTATE GROUP

PROPERTY RETAIL MAP



FLOOR PLAN - SUITE 100



PHOTOS OF SUITE 100

