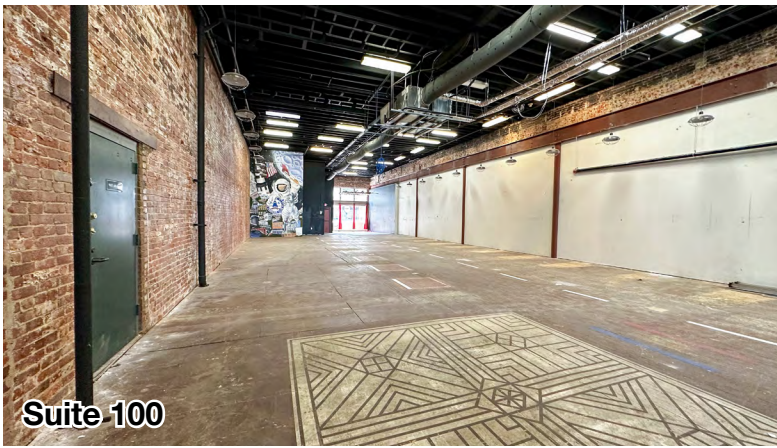
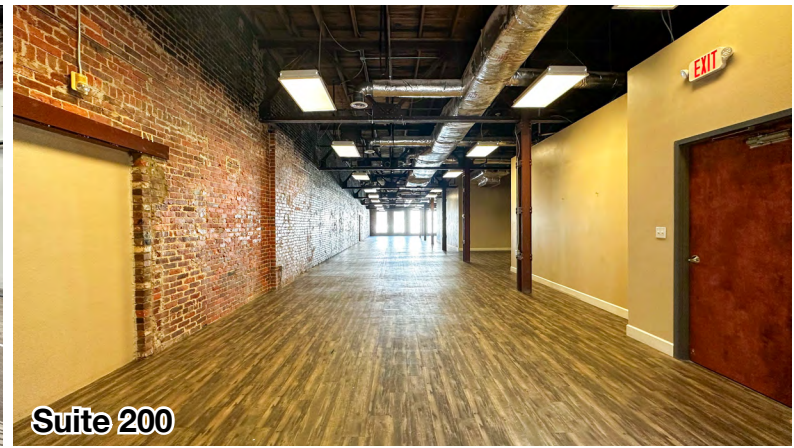


# 105 Washington Street - HUNTSVILLE, AL

RARE DOWNTOWN HUNTSVILLE SPACES FOR LEASE



Suite 100



Suite 200

## PROPERTY HIGHLIGHTS

- Property is situated on a street with some of the highest foot traffic in Downtown Huntsville thanks to its proximity to The Garage at Clinton Row, Clinton Row Shops, The Martin, The Bottle, and more.
- Located across the street from Clinton Avenue city parking deck.
- Beautiful historic building featuring exposed interior brickwork.
- Suite 100 is located on the first floor and Suite 200 is on the second.
- Easy access to and from Interstate 565 and Memorial Parkway.
- In area with more than 1,000 nearby hotel rooms and vibrant tourism.

## WALKING SCORE

77 - Very Walkable

## ABOUT THE PROPERTY

105 Washington Street is located near the historic square in Downtown Huntsville. The site is a beautiful destination for businesses to join the heart of the city and Huntsville's main district for business, luxury living, dining, retail, and entertainment. The site offers ideal visibility and access in a very walkable neighborhood with an estimated daytime population of 20,771 within one mile.

## LOCATION

105 Washington Street  
Huntsville, AL 35801  
34.731921, -86.586026

## SPACE AVAILABLE

Suite 100 - 3,863 SF  
Suite 200 - 3,863 SF

## PRICE

Please Call For Pricing Information

## FOR MORE INFORMATION CALL

Wesley Crunkleton, CPM  
256-536-8809  
wesley@crunkletonassociates.com



**CRUNKLETON**  
COMMERCIAL REAL ESTATE GROUP

# MAP SHOWING PROPERTY'S LOCATION

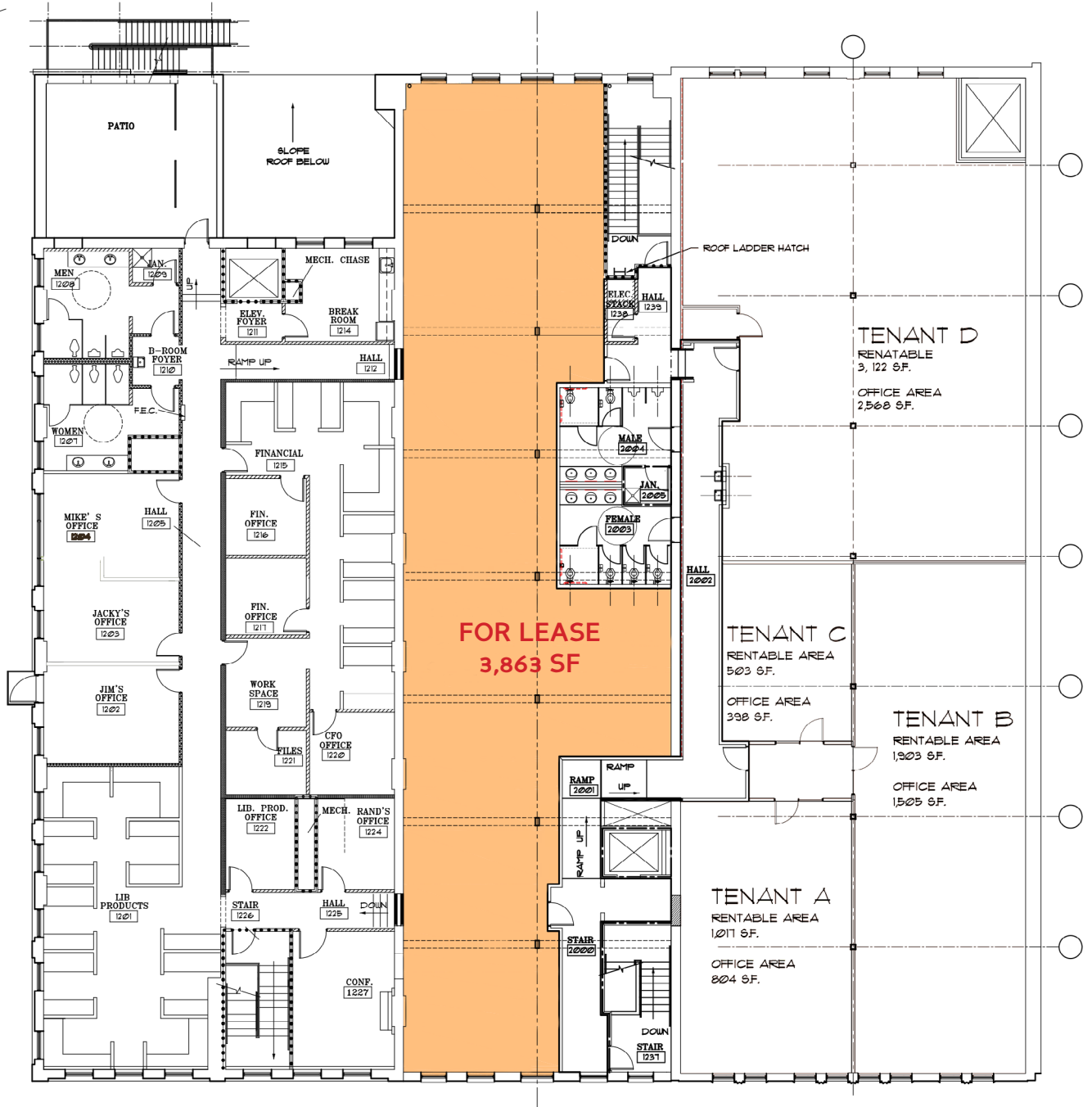


# 1ST FLOOR - SUITE 100



2ND FLOOR - SUITE 200

CLINTON AVENUE



WASHINGTON STREET