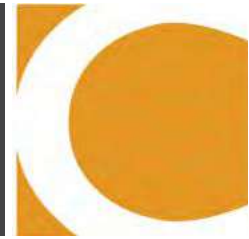


Plummer Road & Research Park Blvd. - HUNTSVILLE, AL

LAND FOR SALE - OPPORTUNITY ZONE



ABOUT THE PROPERTY

This site is located on Plummer Road, part of a major commuting corridor for employees working on Redstone Arsenal and Cummings Research Park. It is near several apartment complexes and schools, and is easily accessible from major roadways.

PROPERTY HIGHLIGHTS

- Location is convenient to Research Park and MidCity.
- All utilities are available on-site.
- Located within Providence Elementary, Williams Middle School, and Columbia High School district.
- Situated in close proximity to Cummings Research Park, Redstone Arsenal, the University of Alabama in Huntsville & Oakwood College.
- Nearby family attractions include the US Space & Rocket Center and Huntsville Botanical Gardens.

LOCATION

Plummer Road & Research Park Blvd.
Huntsville, AL 35816
34.772471, -86.660080

AVAILABLE

16 AC

ZONING

R2B: 15-20 Units Per AC

PRICE

Please Call For Pricing Information

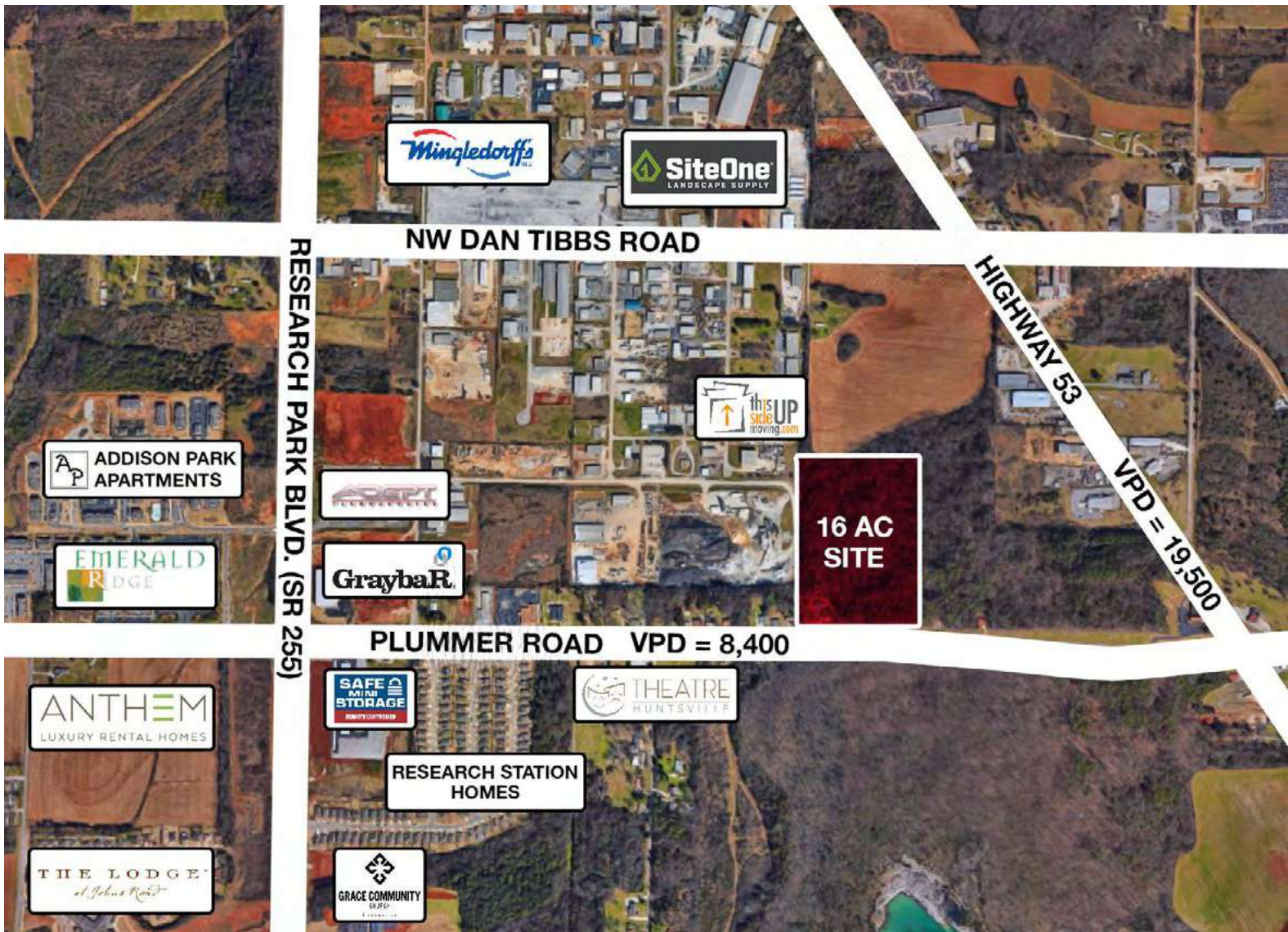
FOR MORE INFORMATION CALL

Anusha Alapati Davis, VP of Retail
256-384-7608



CRUNKLETON
COMMERCIAL REAL ESTATE GROUP

CLOSE-UP PROPERTY MAP



DEMOGRAPHICS

	1 Mile	3 Mile	5 Mile
Population	2,091	40,397	104,815
Households	932	17,376	43,482
Avg Household Income	\$79,772	\$71,800	\$71,877
Avg Vehicles Per Day	19,500 ± On HWY 53		

DEMOGRAPHICS - DRIVE TIME

	5-MIN	10-MIN	15-MIN
Population	17,338	91,856	213,987
Households	7,895	39,337	88,609
Avg Household Income	\$91,599	\$80,948	\$91,807

DRIVE TIMES TO MAJOR HUNTSVILLE AREAS

DOWNTOWN HUNTSVILLE	13 MIN (6.0 MILES)
MIDCITY DISTRICT	10 MIN (4.9 MILES)
REDSTONE ARSENAL	15 MIN (6.9 MILES)
CUMMINGS RESEARCH PARK	8 MIN (5.2 MILES)
BRIDGE STREET TOWN CENTRE	10 MIN (5.9 MILES)
MADISON, AL	15 MIN (11 MILES)

