

REDSTONE RIDGE - HUNTSVILLE, AL

RETAIL SPACE FOR LEASE



PROPERTY HIGHLIGHTS

- Walmart Shadow center in South Huntsville
- Suite GH is a restaurant infrastructure including commercial kitchen, vent hood, cooler, sinks, etc.
- Located in southeast Huntsville's most densely populated neighborhood.
- Site offers abundant customer parking.
- Great co-tenancy with a diverse range of goods and services that promotes heavy traffic to the center.

DEMOGRAPHICS

	3 Mile	5 Mile	10 Mile
Population	31,718	56,267	166,232
Households	13,409	24,586	71,691
Avg Household Income	\$99,898	\$100,311	\$88,881
Avg Vehicles Per Day	47,000 ± on S Memorial Parkway		

ABOUT THE PROPERTY

Located in southeast Huntsville next to Walmart Supercenter, this ideally located shopping center is surrounded by a thriving neighborhood of over 24,586 households within a 5-mile radius with an average income of \$100,311.

LOCATION

11700 S. Memorial Parkway
Huntsville, AL 35803
34.613958, -86.569394

SPACE AVAILABLE

SUITE GH - 3,200 SF
SUITE K - 1,200 SF

PRICE

CALL FOR PRICING

FOR MORE INFORMATION CONTACT:

Anusha Alapati Davis
256-384-7608
anusha@crunkletonassociates.com

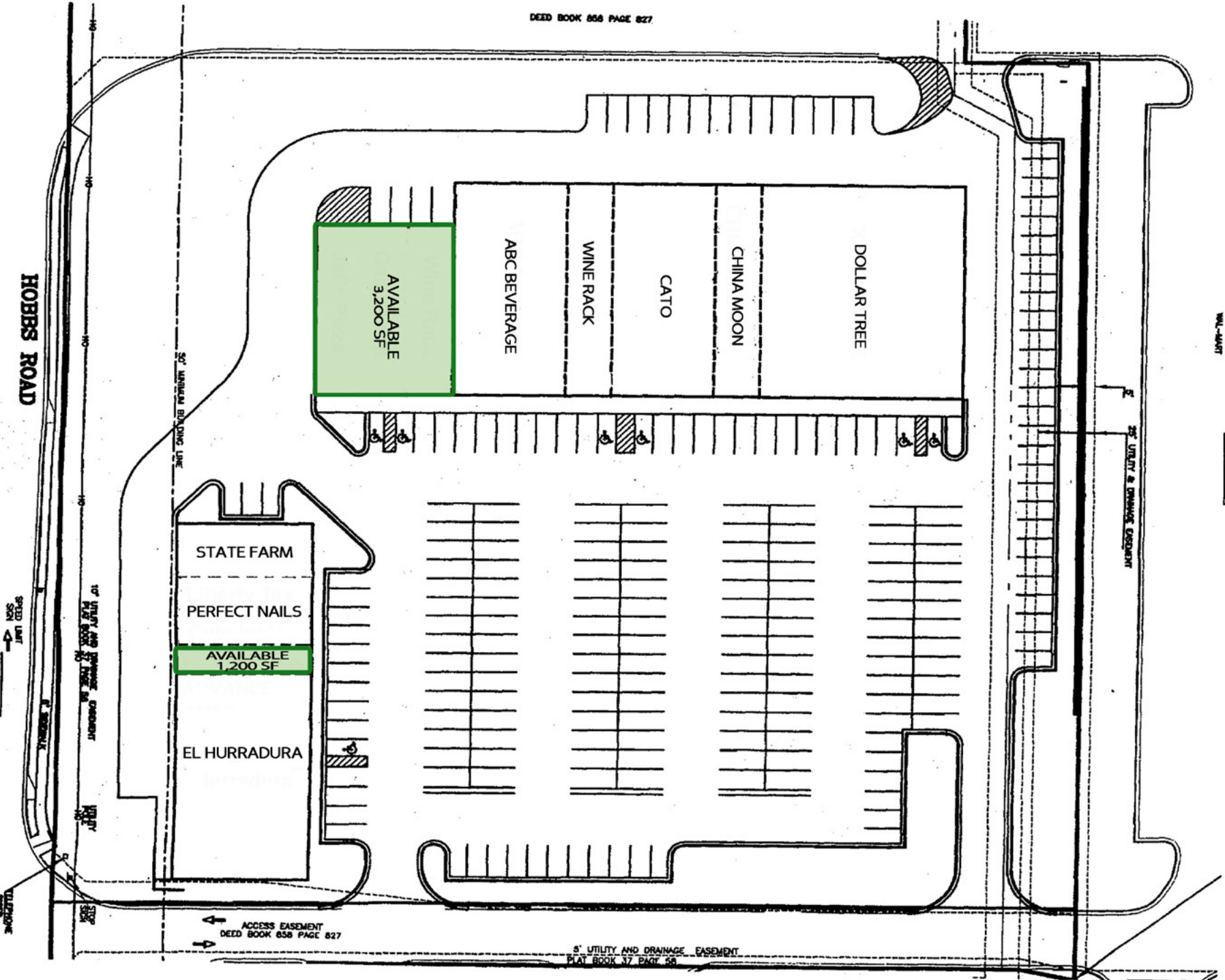


PROPERTY RETAIL MAP



REDSTONE RIDGE SITE PLAN

WLL-444RT



DEED BOOK 658 PAGE 827

HOBBS ROAD

50' MANHOLE BUILDING LINE

5' UTILITY & DRAINAGE EASEMENT

STATE FARM
PERFECT NAILS
AVAILABLE
1,200 SF
EL HURRADURA

AVAILABLE
3,200 SF
ABC BEVERAGE
WINE RACK
CATO
CHINA MOON
DOLLAR TREE

ACCESS EASEMENT
DEED BOOK 658 PAGE 827

5' UTILITY AND DRAINAGE EASEMENT
PLAT BOOK 37 PAGE 58

SPEED LIMIT
50

5' UTILITY AND DRAINAGE EASEMENT
DEED BOOK 658 PAGE 827

LANDSCAPE
MESH