

The Foundry - HUNTSVILLE, AL

RETAIL SPACE FOR LEASE AT NEW
WEST HUNTSVILLE DEVELOPMENT - THE FOUNDRY!



THE Foundry
APARTMENTS
@STOVEHOUSE

"The Foundry" is a planned mixed-use development that is adjacent to ~50,000 SF of office space, and includes ~40,000 SF of retail/restaurant space, 328 multifamily units, and 14 rentable townhomes.



PROPERTY HIGHLIGHTS

- Along major thoroughfare with high traffic counts.
- Four multi-family projects totaling over 700 units within one mile of site.
- High-visibility signage on Governors Drive.
- Plenty of parking.
- Outdoor patio seating opportunities.
- At a signalized intersection.
- Property is adjacent to high-profile Stovehouse development that encompasses ~80,000 SF of office and ~30,000 SF of retail, plus abundant event space.
- Inside entertainment district.
- Walkable community via 10 ft. wide illuminated sidewalk along Governors Drive.

LOCATION

3810 Governors Dr. SW,
Huntsville, AL 35805
34.720948, -86.617316

SPACE AVAILABLE

4,300 ± SF Of Space
Space can be divided as needed.

PRICE

Please Call For Pricing Information

DEMOGRAPHICS

	1 Mile	3 Mile	5 Mile
Population	9,971	65,065	122,246
Households	4,389	28,616	54,138
Avg Vehicles Per Day	28,679 ± On Governors Drive		

FOR MORE INFORMATION CALL

Anusha Alapati Davis
256-384-7608
anusha@crunkletonassociates.com

Wesley Crunkleton, CPM
256-536-8809
wesley@crunkletonassociates.com



CRUNKLETON
COMMERCIAL REAL ESTATE GROUP

PROPERTY RETAIL MAP



RETAIL SPACE BREAKDOWN

AVAILABLE SPACES AND SIZES INDICATED BELOW



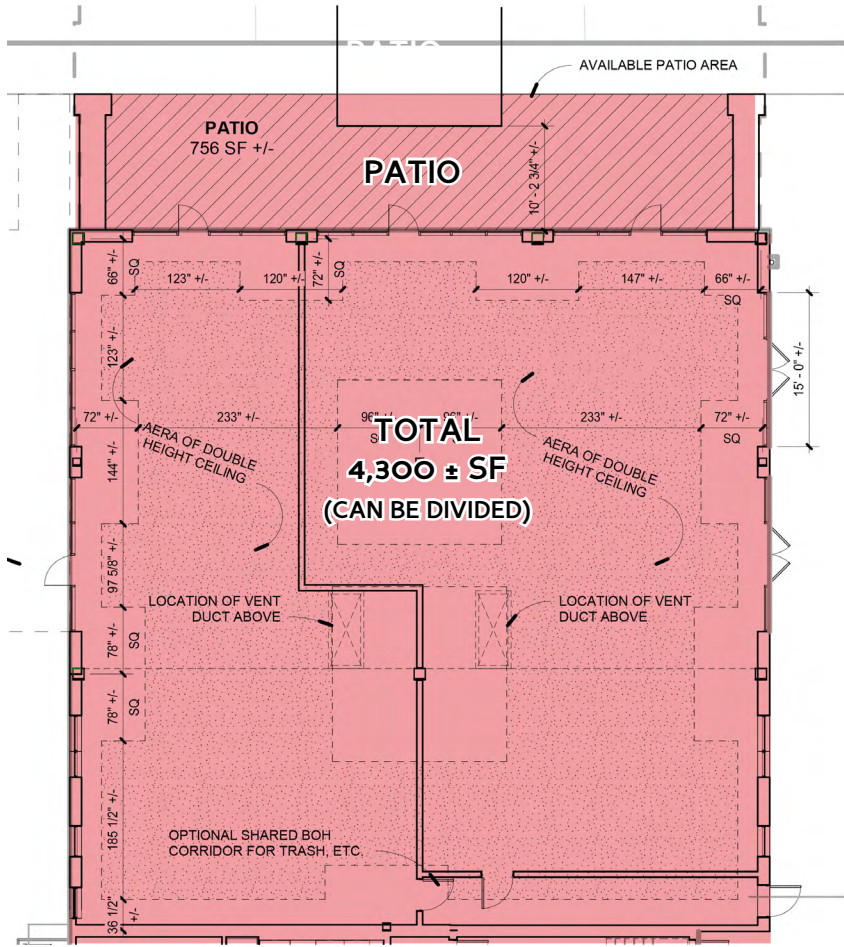
OFFICE	3 Levels 49,000 SF +/-
MIXED USE	4,300 SF +/- RETAIL
6 Live/Work Units	
51 Stacked Flats Units	

MULTI-FAMILY FLATS	271 Units
Building C,D,E	
TOWNHOMES	14 Units
Building F,G,H	
RETAIL	5,500 SF +/-
Building I	

MAINTENANCE SHED	676 Spaces
Building J	
PRIVATE GARGAES	
Building K, L & M	20 Units
PARKING	
Total	676 Spaces

GROCERY STORE - 2025 OPENING	40,000 ± SF
Food City	

BUILDING B - FLOOR PLAN - 4,300 SF ±



- Outdoor patio
- High ceilings
- Grease trap

BUILDING B

