

11515 Gilleland Rd. - HUNTSVILLE, AL

LAND FOR SALE OR BUILD-TO-SUIT



MAGNA CARTA PLACE



MEMORIAL PKWY SW



VPD = 45,205

GILLELAND DRIVE

GILLELAND ROAD

0.6 AC

PROPERTY HIGHLIGHTS

- Site is ideal for a warehouse/flex space property.
- Easy access to Memorial Parkway South.
- Near multiple restaurants and retail concepts.
- Situated in South Huntsville near Redstone Arsenal Gate 3 and the coming 850-acre Hays Farm development.
- Property is near nature preserves, homes, retail, restaurants, a dog park, sports fields, and nearly 6.5 miles of walking trails.

DEMOGRAPHICS

	1 Mile	3 Mile	5 Mile
Population	7,122	34,423	57,753
Households	3,215	14,809	25,119
Avg Household Income	\$98,094	\$98,112	\$99,700
Avg Vehicles Per Day	45,205 ± Memorial Pkwy S		

ABOUT THE PROPERTY

This parcel on Gilleland Road is right off Memorial Parkway (Highway 231), the city's main thoroughfare. A 0.6 acre tract, this property is an excellent opportunity for a warehouse or flex space. The owner has provided plans for a potential 6,000 SF build for construction. (See back of flier.)

LOCATION

11515 Gilleland Rd.
Huntsville, AL 35803
34.622033, -86.565131

LAND AVAILABLE

0.6 AC

PRICE

\$199,000 or Will Build-to-Suit

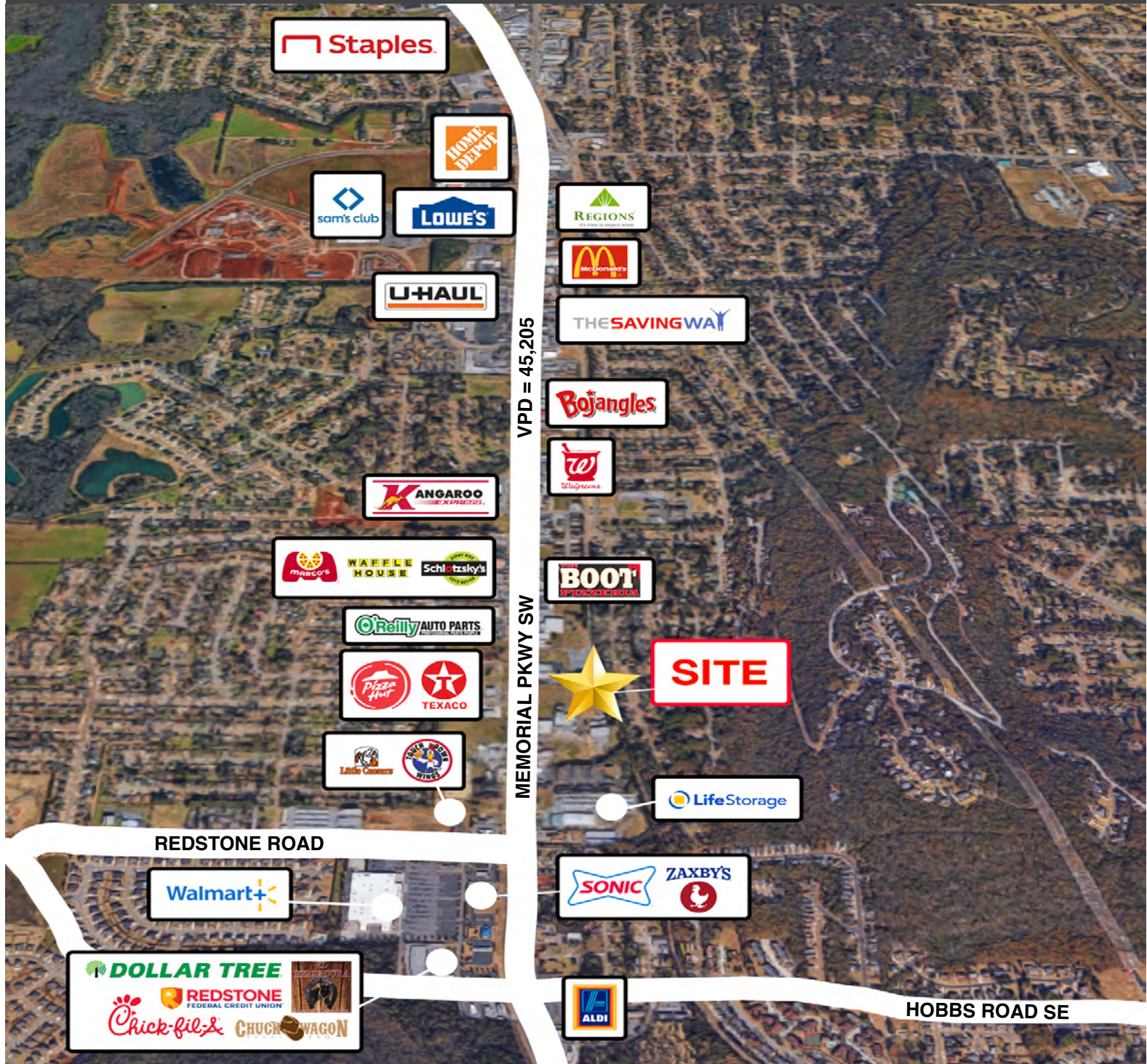
FOR MORE INFORMATION CALL

Zac Buckley
256-384-7607



CRUNKLETON
COMMERCIAL REAL ESTATE GROUP

PROPERTY MAP



POTENTIAL BUILD FOR CONSTRUCTION