

THE  
*Range*

3810  
GOVERNORS DR.  
SW HUNTSVILLE,  
AL 35805

OFFICE SUITE  
**FOR LEASE**



**LAST  
REMAINING  
SUITE**

## MODERN OFFICE DEVELOPMENT IN THE HEART OF THE STOVEHOUSE DISTRICT

Located on Governors Drive, this Class-A building offers 49,000 square feet across three floors. Features include a spacious lobby, an open-air courtyard with community Wi-Fi, and convenient access to restaurants, bars, grocery stores, and live entertainment, all within walking distance.

CONVENIENT COMMUTE

LUXURIOUS AMENITIES

VIBRANT COMMUNITY

PROMINENT SIGNAGE

NEW DEVELOPMENTS

VISIBILITY & ACCESS

FREE PARKING



**ERIC ST. JOHN, CCIM**  
Vice President  
256-384-7603  
eric@crunkletonassociates.com

**WESLEY CRUNKLETON, CPM**  
Principal  
256-536-8809  
wesley@crunkletonassociates.com

# PROPERTY HIGHLIGHTS



## ADDRESS

3810 Governors Dr. SW  
Huntsville, AL 35805



## PROPERTY NAME

The Range



## SQ FT AVAILABLE

5,115 SF



## TYPE OF PROPERTY

Office



## PARKING

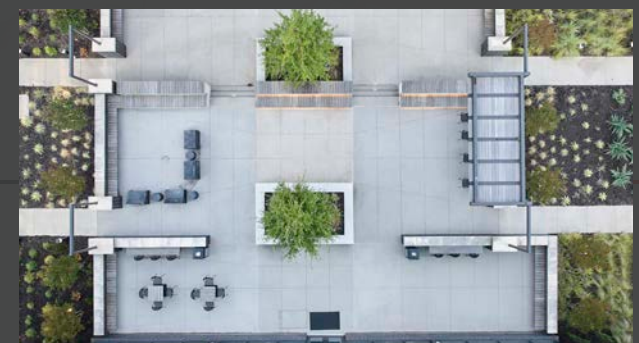
FREE Parking



## PRICE

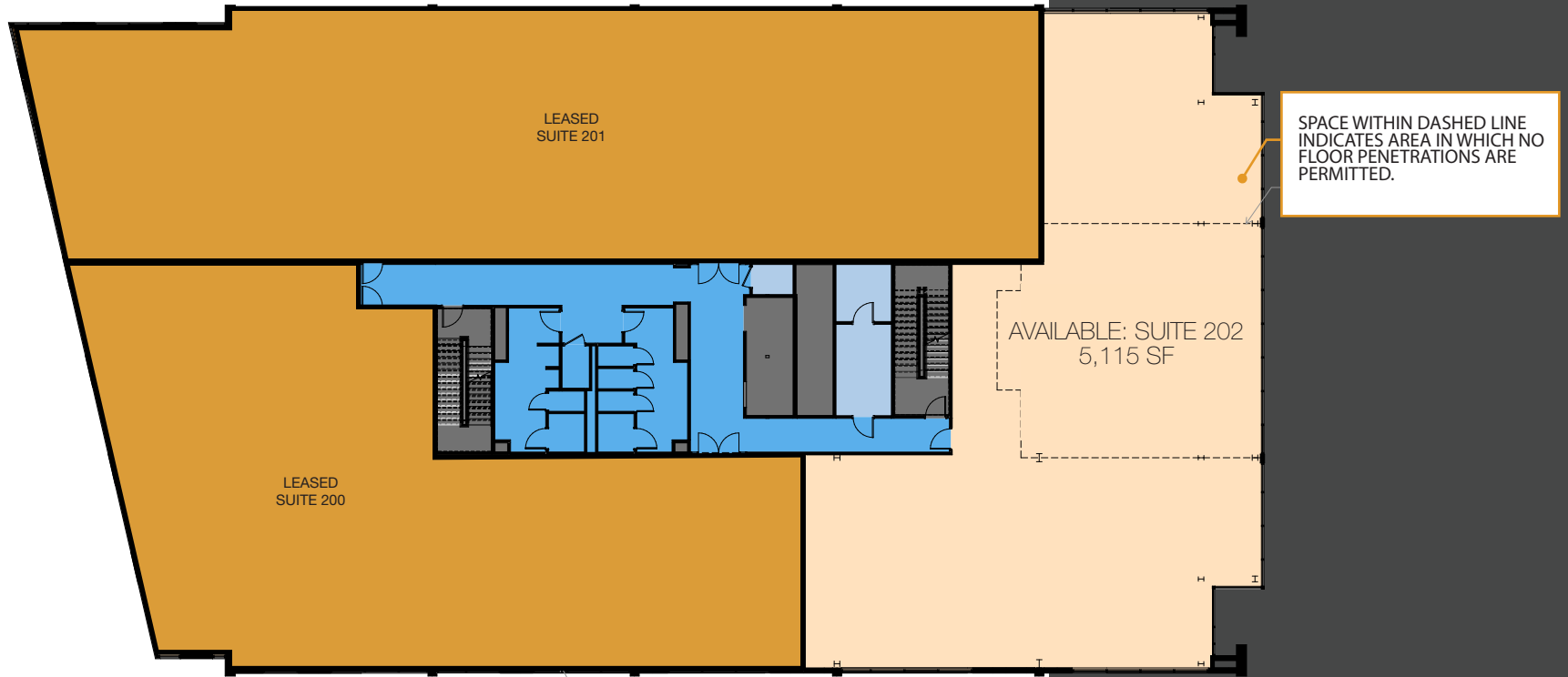
Call For Pricing

- Enjoy a short drive from Downtown Huntsville, Redstone Arsenal, Cummings Research Park, Huntsville Hospital Medical District, and other key areas.
- Located next to the popular Stovehouse development, offering a variety of local restaurants, an outdoor food garden, a wine bar, live music/events, fitness studios, a coffee shop, outdoor games, grocery store, and more.
- Neighboring “The Foundry,” a mixed-use development featuring restaurant/retail spaces, 342 multifamily units, including 14 rentable townhomes.
- Direct access to the I-565 exit ramp via Governors Drive, with high visibility on Governors Drive (30,400 vehicles/day) and I-565 (97,756 vehicles/day).
- Benefit from available signage facing busy traffic roadways; Governors Drive and I-565.
- Enjoy a beautifully designed highend courtyard perfect for leisure with ample seating and wifi.



# FLOOR PLAN

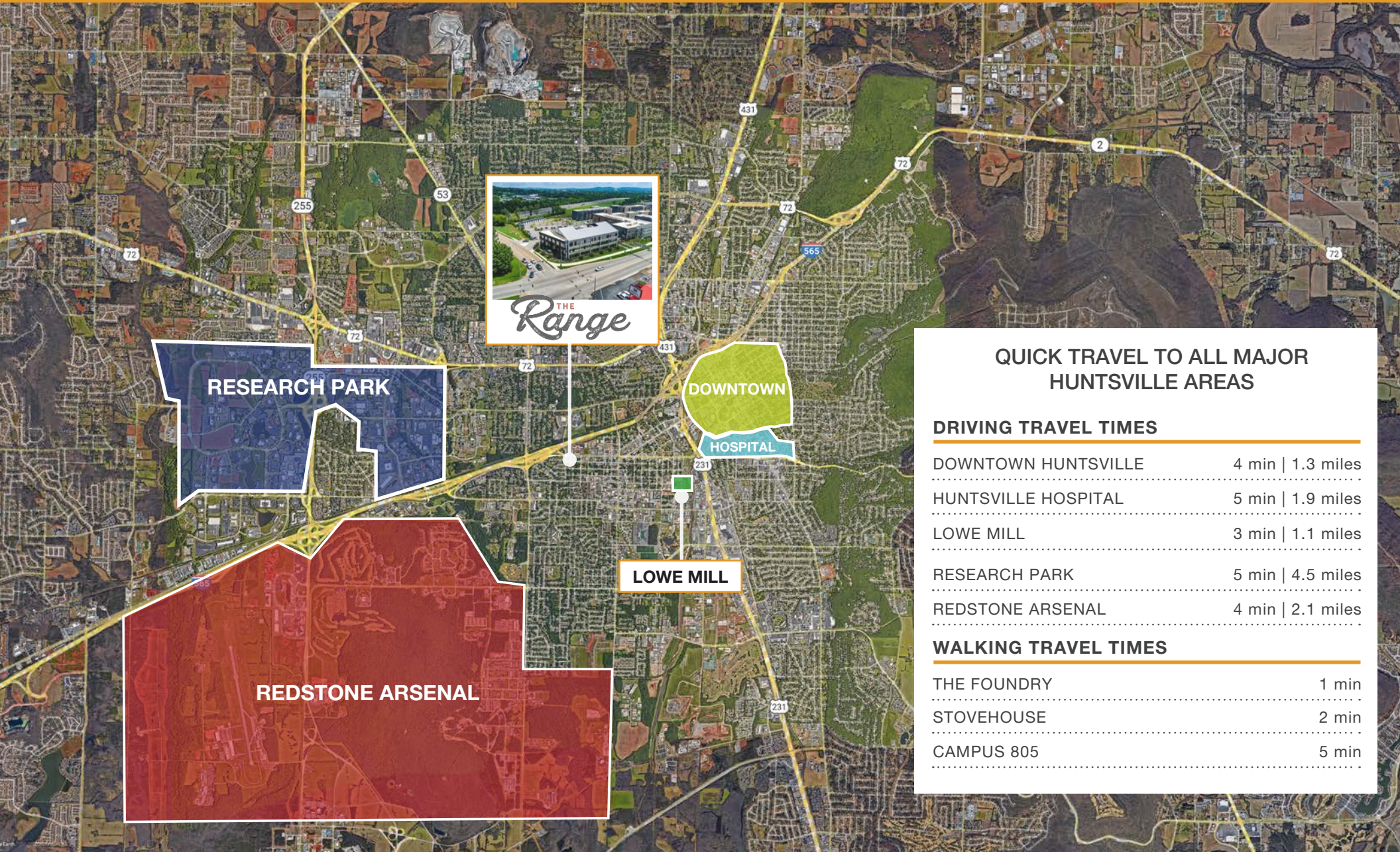
## SECOND FLOOR- SUITE 202 5,115 SF AVAILABLE



# SITE PLAN



# AREA MAP



## QUICK TRAVEL TO ALL MAJOR HUNTSVILLE AREAS

### DRIVING TRAVEL TIMES

DOWNTOWN HUNTSVILLE	4 min   1.3 miles
HUNTSVILLE HOSPITAL	5 min   1.9 miles
LOWE MILL	3 min   1.1 miles
RESEARCH PARK	5 min   4.5 miles
REDSTONE ARSENAL	4 min   2.1 miles

### WALKING TRAVEL TIMES

THE FOUNDRY	1 min
STOVEHOUSE	2 min
CAMPUS 805	5 min

# WALKABLE RETAIL AND RESTAURANT OPTIONS AT YOUR CONVENIENCE



# PHOTOS

---



# THE *Range*

3810 GOVERNORS DR. SW  
HUNTSVILLE, AL 35805



**CRUNKLETON**  
COMMERCIAL REAL ESTATE GROUP

300 Pratt Ave NE Huntsville AL 35801  
256-536-8809  
crunkletonassociates.com

**ERIC ST. JOHN, CCIM**  
Vice President  
256-384-7603  
eric@crunkletonassociates.com

**WESLEY CRUNKLETON, CPM**  
Principal  
256-536-8809  
wesley@crunkletonassociates.com