

# 24557 John T. Reid Parkway - SCOTTSBORO, AL

## RESTAURANT SPACE FOR LEASE OR SALE



### PROPERTY HIGHLIGHTS

- Property is available for lease or sale transaction.
- Building is newly renovated.
- Site includes easy accessibility and drive-thru.
- Property has 52 parking spaces, plenty of room for employees and clientele.
- Situated on one of the most high-traffic roads in Scottsboro; more than 29,400 vehicles per day.

### DEMOGRAPHICS

	1 Mile	3 Mile	5 Mile
Population	2,828	10,632	15,173
Households	1,233	4,438	6,356
Avg Household Income	\$60,899	\$54,887	\$56,148
Avg Vehicles Per Day	29,440 ± On John T. Reid Pkwy		

### ABOUT THE PROPERTY

24557 John T. Reid Parkway is a restaurant space situated in Scottsboro's busy retail corridor. Featuring high traffic counts and multiple high-profile retailers, the area is a prime location for restaurant and retail businesses. The site is highly visible from the parkway.

### LOCATION

24557 John T. Reid Parkway  
Scottsboro, AL 35768  
34.665742, -86.011572

### SPACE AVAILABLE

2,163 SF of Retail/Restaurant Space  
1.07 AC

### PRICE

Please Call For Pricing Information

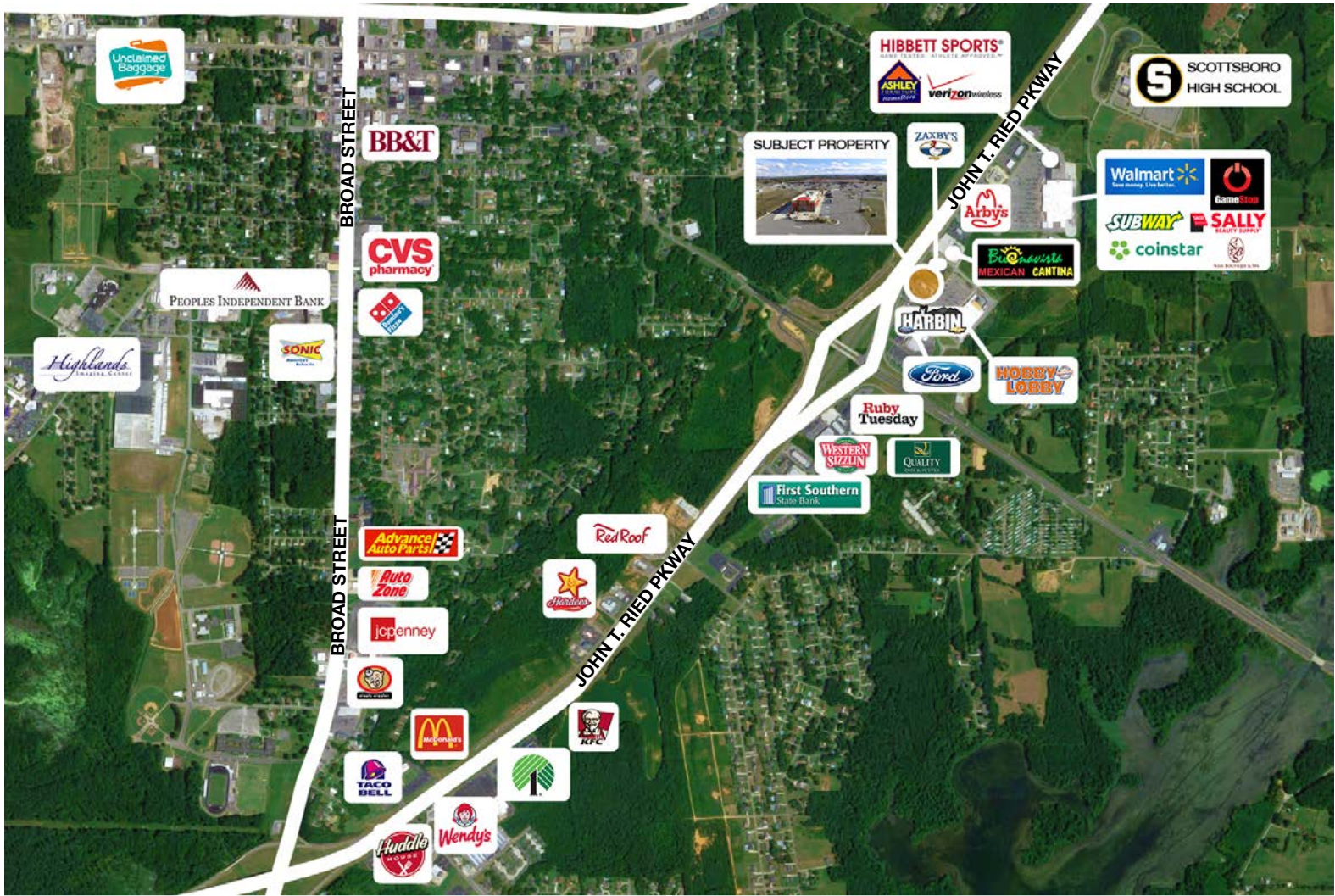
### FOR MORE INFORMATION CALL

Anusha Davis  
256-536-8809



**CRUNKLETON**  
COMMERCIAL REAL ESTATE GROUP

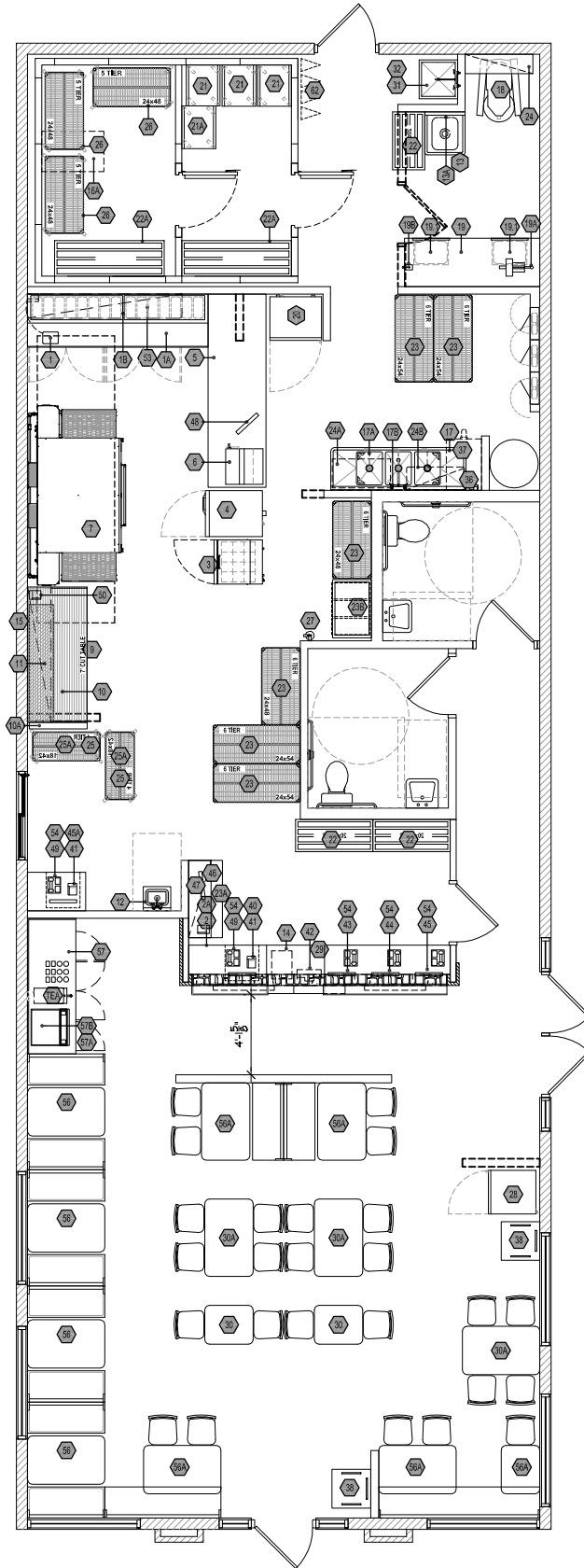
# PROPERTY RETAIL MAP



#1F  
2126 SF

SCOTSBORO, AL  
BIREN PATEL

OCCUPANT LOAD 61  
SEATING CAPACITY 54



DATE: 10-8-15  
BDW PROJECT #:  
15-2398-138



PROPOSED LAYOUT FOR  
SCOTSBORO, AL

SCHEME #:  
#1F

FRANCHISEE:  
BIREN PATEL

