



LAND FOR SALE



ABOUT THE PROPERTY

The Byers Family Land is located in Huntsville, Alabama, and includes several lots of land available for sale. Lots are divisible. Site is situated on the highly trafficked intersection of Moores Mill Road and Winchester Road, this property is nearby well-known retail businesses including Burger King, CVS Pharmacy, Kroger, Advanced Auto Parts, Mapco, and more.

LOCATION
 6001-6005 Moores Mill Rd.
 Huntsville, AL 35811
 34.7982862, -86.5369951

LAND AVAILABLE
 Lot 1: 1.47 AC
 Lot 2: 4.15 AC (Divisible)

PRICE
 Call For Pricing

DEMOGRAPHICS	3-Miles	5-Miles	10-Miles
Population	22,744	69,008	223,597
Households	7,804	27,470	94,844
Avg HH Income	\$115,755	\$104,326	\$105,051
Avg Vehicle Per Day	24,737 on Winchester Road		

PROPERTY HIGHLIGHTS

- Located off the busy intersection of Moores Mill Road and Winchester Road NE with 986.37 feet of available frontage.
- Land is zoned C4 and/or C1.
- Nearby household growth is at 0.91% compared to 0.46% for the state of Alabama.
- Situated in an affluent community with average household income of more than \$100K per year, within a 5-mile radius.

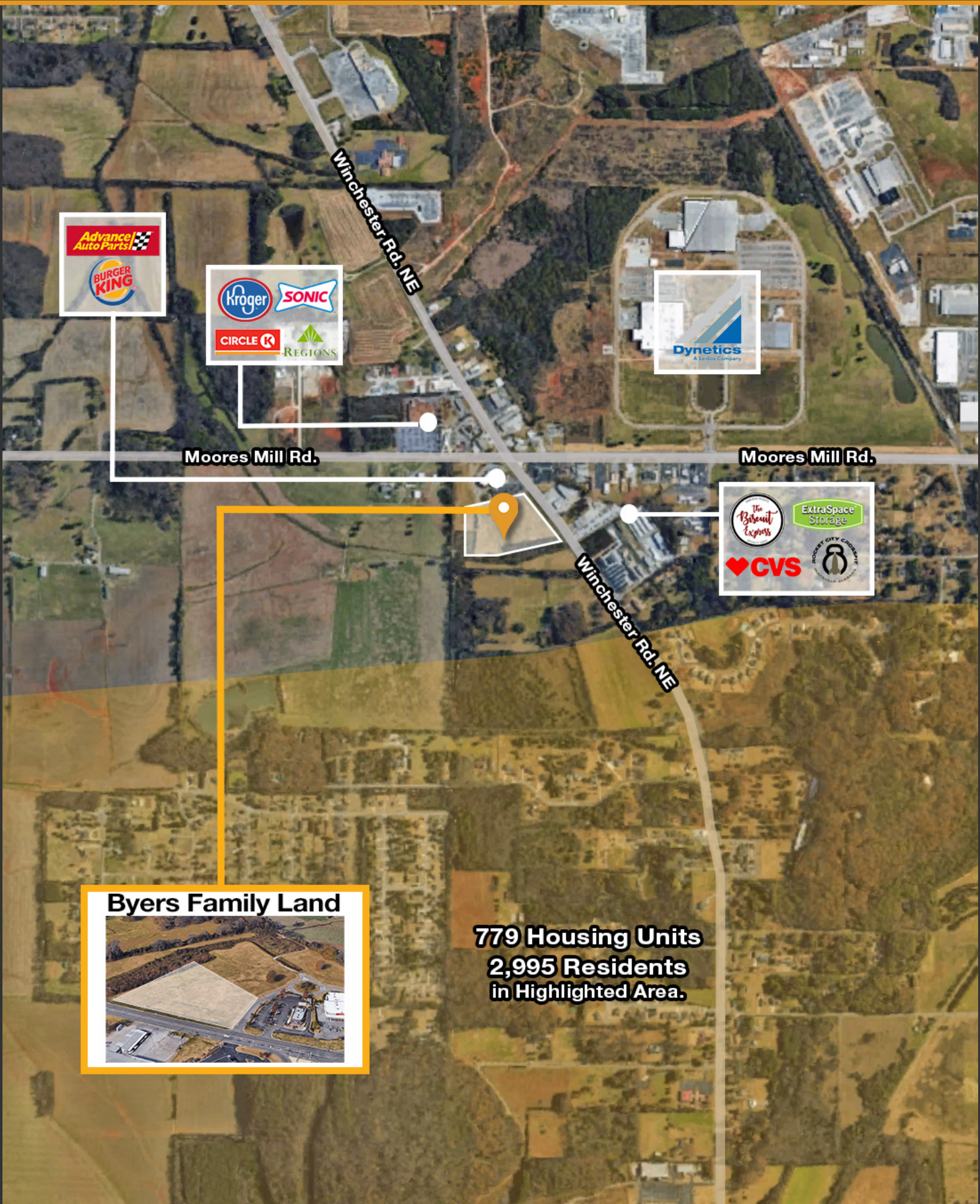


FOR MORE INFORMATION:

James Proctor | Director of Land Services

📞 256-384-7609 ✉ James@crunkletonassociates.com

PROPERTY AREA MAP



Moores Mill Rd.

Moores Mill Rd.

Winchester Rd. NE

Byers Family Land



**779 Housing Units
2,995 Residents
in Highlighted Area.**